



INDUSTRY SAFETY ALERT

The importance of maintaining driver awareness:

Recent collisions on a rail crossing and dusty resource road serve as reminders

Locations: near Quesnel and Bamfield, BC

Date of Incidents: June 2020

Details of Incident 1: A logging truck driver sustained minor injuries after his trailer was struck by a freight train near Quesnel. RCMP investigation revealed an eastbound loaded logging truck was crossing a marked rail crossing when a southbound freight train collided with the trailer.

As a result of the collision, the logging truck and trailer flipped onto its side, spilling the load of logs into the ditch. The driver of the truck was transported by ambulance with minor injuries. The road and rail line were shut down for a short period of time to clear the debris from the roadway.

Source: [Quesnel RCMP news release](#)

Details of Incident 2: A recent serious accident on the Bamfield Main logging road on Vancouver Island offers a reminder to drivers that dust on resource roads during summer months create a serious safety concern.

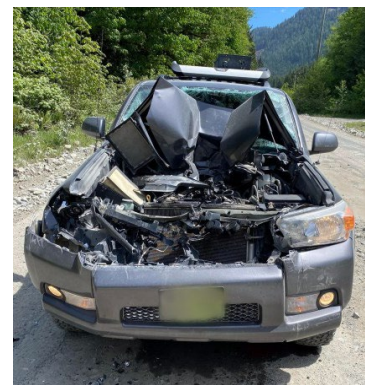
A forestry engineer driving an SUV rear-ended a logging truck that was obscured by dust clouds. The driver was familiar with the road and had travelled it numerous times.

RCMP urge drivers to reduce speeds - especially when conditions are dusty, maintain a following distance that allows for dust to dissipate and to keep headlights and taillights turned on.

[Link to newspaper article \(source\)](#)

Recommended Preventative Actions:

- Be aware of conditions and your surroundings at all times
- Adjust driving speed to conditions
- Expect the Unexpected!



BC **Forest Safety**

Main Office: 420 Albert Street, Nanaimo, BC, V9R 2V7
Central BC: 2666 Queensway, Prince George, BC, V2L 1N2
Toll Free: 1.877.741.1060 | bcforestsafe.org